

Active Material Characteristics

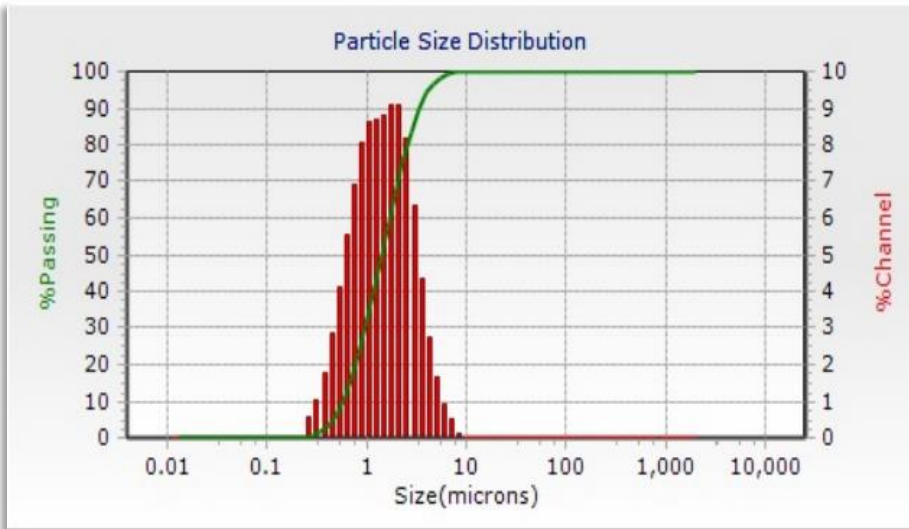
NEI Part #: CBP-60

Product Description: Lithium Iron Phosphate (LFP) powder

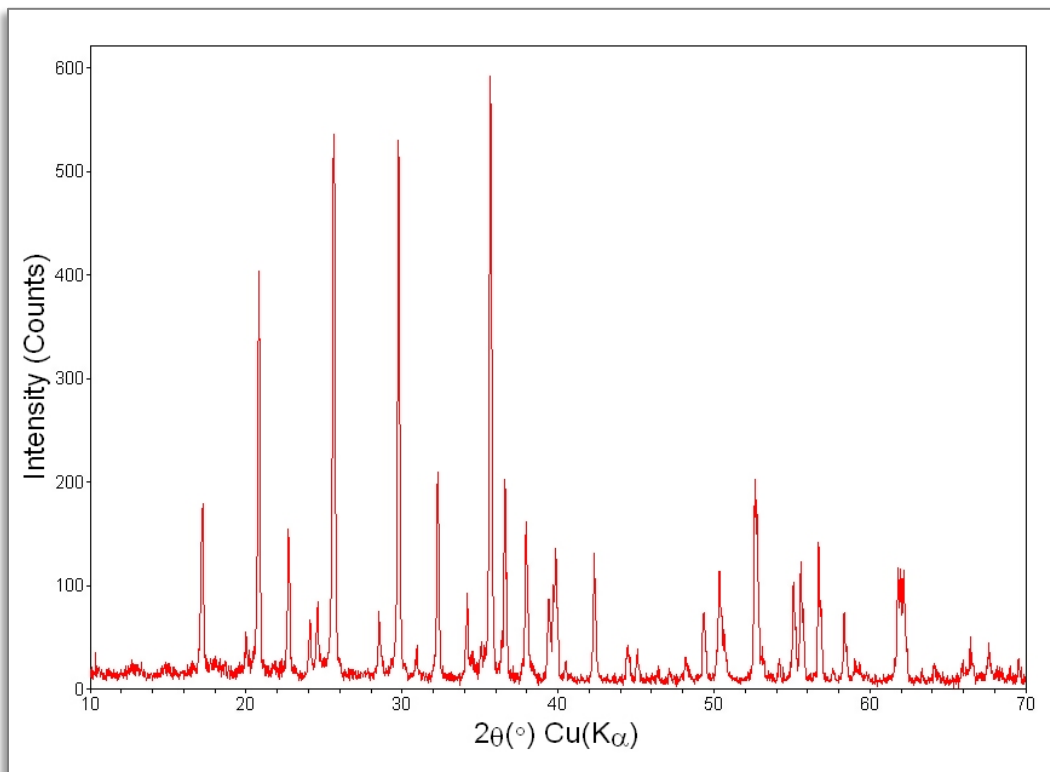
Formula: LiFePO₄

Structure: Polycrystalline

Average Particle Size (D₅₀): 1.5 μm



Percentiles	
%Tile Size(um)	
10.00	0.570
20.00	0.764
30.00	0.954
40.00	1.167
50.00	1.424
60.00	1.731
70.00	2.092
80.00	2.549
90.00	3.30
95.00	4.08



Electrical Characteristics

Typical First Charge Capacity:	160 mAh/g
Typical First Discharge Capacity:	150 mAh/g
Minimum First Discharge Capacity:	≥ 145 mAh/g (@ 0.1C)
Voltage Range:	4.3 -2.5V

Available Quantities

NEI's Lithium-ion cathode battery powders are available in quantities of 500g, 1kg, 5kg and 10kg.

Precautions for Safe Storage & Handling

Appropriate personal protective equipment should be used at all times. Provide appropriate exhaust ventilation at places where dust is formed. Keep container tightly closed in a dry and well-ventilated place.

Refer to SDS for complete safety information of this material.

NOTE: NEI Corporation believes that the information in this spec sheet is an accurate description of the typical use of the product. However, NEI disclaims any liability for incidental or consequential damages, which may result from the use of their products that are beyond its control. Employers should use this information only as a supplement to other information gathered by them and should make independent judgments of suitability of this information to ensure proper use and protect the health and safety of employees. Therefore, it is the user's responsibility to thoroughly test the product in their particular application to determine its performance, efficacy, and safety. Nothing contained herein is to be considered as permission or a recommendation to infringe any patent or any other intellectual right.