

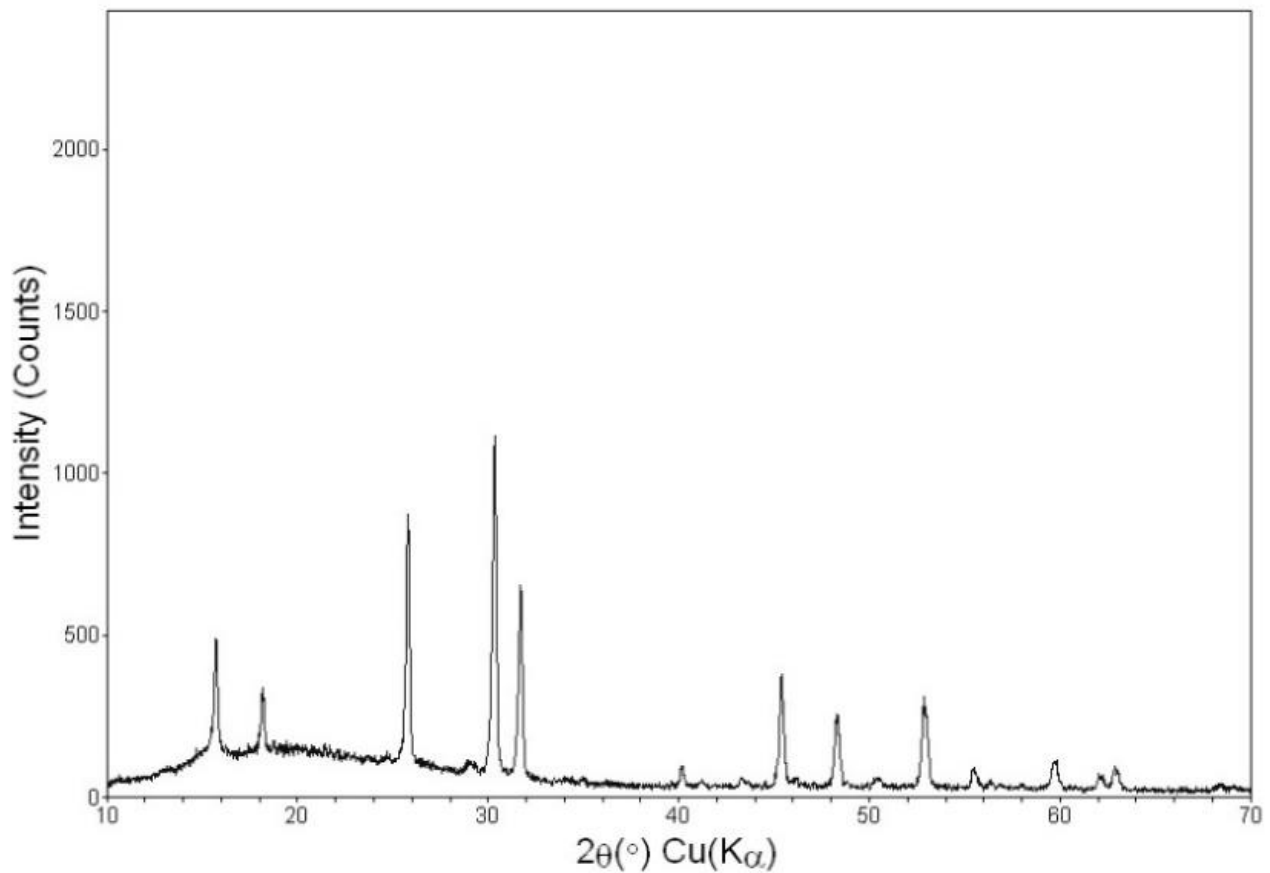
Physical Characteristics

Product Name & Description:	Cl-rich Lithium Phosphorus Sulfur Chloride
Chemical Formula:	$\text{Li}_{5.5}\text{PS}_{4.5}\text{Cl}_{1.5}$
Color:	Light brown, Beige
Phase Purity:	$\geq 95\%$
Molecular Weight:	266.625 g/mole
Crystal Structure:	Argyrodite
Crystal Density:	1.64 g/cm ³
Ionic Conductivity:	$3 - 5 \times 10^{-3}$ S/cm (unsintered, cold-pressed pellet @ RT) <i>*Sintered material will have higher ionic conductivity</i>

Operating Conditions

Stability Voltage Window:	~ 7.0V vs. Li/Li+
Sensitivity to Air or Moisture:	Highly Sensitive
Recommended Working Atmosphere:	Inert Atmosphere (Ar/He)

Characterization Data



X-ray Diffraction (XRD)

Available Quantities

NEI's Cl-rich LPSCI powder is available for purchase in quantities of 10g, 25g, 50g, 100g, 250g, 500g, and 1kg.
Large and bulk quantities are available upon request.

Storage & Handling

Precautions for Safe Handling

Handle in a controlled environment, under inert gas. Never allow product to come in contact with moisture or water.

Appropriate personal protective equipment should be used at all times. Avoid contact with eyes and skin. Provide good ventilation or extraction and avoid breathing vapors.

Conditions for Safe Storage

Store under inert gas in a cool, dry, and well-ventilated place. Keep container tightly sealed and protect from moisture. Never allow product to get in contact with water during storage.

Refer to SDS for complete information on the safe handling of this material.

NOTE: NEI Corporation believes that the information in this spec sheet is an accurate description of the typical use of the product. However, NEI disclaims any liability for incidental or consequential damages, which may result from the use of their products that are beyond its control. Employers should use this information only as a supplement to other information gathered by them and should make independent judgment of suitability of this information to ensure proper use and protect the health and safety of employees. Therefore, it is the user's responsibility to thoroughly test the product in their particular application to determine its performance, efficacy, and safety. Nothing contained herein is to be considered as permission or a recommendation to infringe any patent or any other intellectual right.