

Physical Characteristics

Product Name & Description:	Lithium Indium Chloride powder
Chemical Formula:	Li_3InCl_6
Color:	Off white
Phase Purity:	> 95%
Crystal Structure:	Monoclinic
Molecular Weight:	348.35 g/mole
Crystal Density:	2.56 g/cm^3
Particle Size:	Unavailable*
Ionic Conductivity:	$1 - 5 \times 10^{-3} \text{ S/cm}^\#$ at RT (<i>sintered material will have higher ionic conductivity</i>)

Notes:

*The hygroscopic nature of the particles makes it difficult to measure particle size.

^\#The uncertainty in the ionic conductivity value is due to variability in sample preparation and measurement.

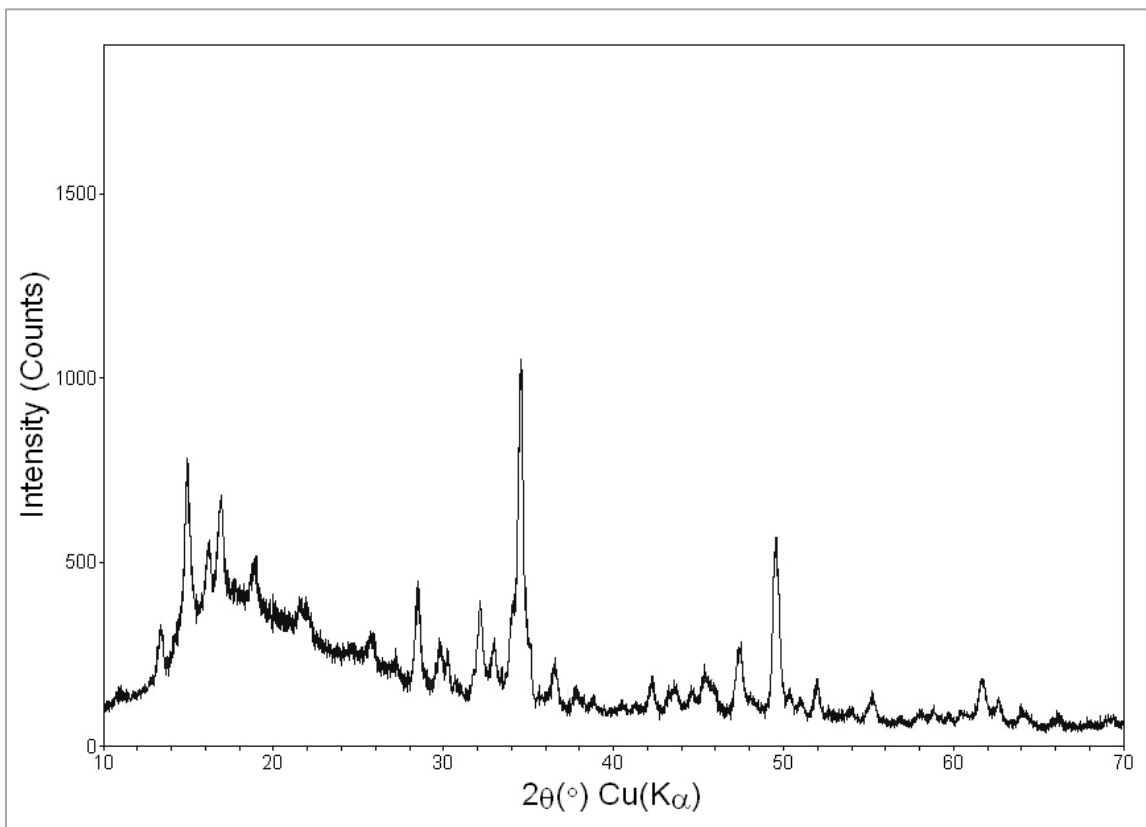
Operating Conditions

Stability Voltage Window: ~ 4.3V vs. Li/Li+

Sensitivity Moisture: Highly Sensitive

Recommended Working Atmosphere: Dry Room or Inert Atmosphere (Ar/He)

Characterization Data



X-ray Diffraction (XRD)

Available Quantities

NEI's Lithium Indium Chloride powder is available for purchase in quantities of 10g, 25g, 50g, 100g, 250g, 500g, and 1kg.
Large and bulk quantities are available upon request.

Storage & Handling

Precautions for Safe Handling

Handle in a controlled environment, such as a dry room or glove box. Appropriate personal protective equipment should be used at all times. Avoid contact with eyes and skin. Do not inhale substance/mixture. Avoid formation of dust and aerosols. Provide appropriate exhaust ventilation at places where dust is formed. For additional precautions, see section 2.2.

Conditions for Safe Storage

Keep container tightly sealed, in a cool, dry place. This material is hygroscopic. Keep away from moisture and acids. Store in a locked cabinet or with access restricted to technical experts or their assistants. Storage class (TRGS 510): 6.1D: Non-combustible, acute toxic Cat.3 / toxic hazardous materials or hazardous materials causing chronic effects.

Refer to SDS for complete information on the safe handling of this material.

NOTE: NEI Corporation believes that the information in this spec sheet is an accurate description of the typical use of the product. However, NEI disclaims any liability for incidental or consequential damages, which may result from the use of their products that are beyond its control. Employers should use this information only as a supplement to other information gathered by them and should make independent judgment of suitability of this information to ensure proper use and protect the health and safety of employees. Therefore, it is the user's responsibility to thoroughly test the product in their particular application to determine its performance, efficacy, and safety. Nothing contained herein is to be considered as permission or a recommendation to infringe any patent or any other intellectual right.